

Jurassic Maths and The Further Mathematics Support Programme

Use of Technology in 2017 A-Level Maths: Geogebra Workgroup

This workgroup will give participants

- time to discuss how technology can be used to enhance students' learning
- support to develop their skills using Geogebra
- opportunities to share experiences and findings.



Workgroup Sessions

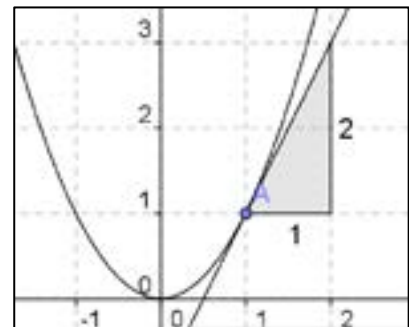
Tuesday 14 November,

Tuesday 16 January,

Tuesday 13 March

All sessions are from 2pm until 5.30pm and are hosted at:

Kings School, Ottery St Mary, Devon. EX11 1RA



Participants in this workgroup will:

- Be teaching the new 2017 Maths A-level to Year 12 mathematicians
- Want to develop their use of technology in the A-level classroom
- Attend and participate in the three sessions
- Work on gap tasks between sessions, sharing their experiences and materials created with the workgroup and the wider Jurassic Hub community

Further information

- This workgroup is open to teachers from state-funded schools.
- Thanks to the [Jurassic Maths Hub](#) funding is available for up to £300 per school to cover transport or cover costs, to be claimed after engaging with the workgroup and completing the end of workgroup evaluation.
- This workgroup would be suitable for for Geogebra novices, but a passing acquaintance with the software would be very beneficial.
- Teachers participating in this workgroup should bring a laptop with Geogebra installed to all three sessions.
- Geogebra is free dynamic geometry software. It can be downloaded or run within a web browser from <https://www.geogebra.org/>

Schools are entitled to send one or (ideally) two participants to each session. There are limited places available. If you wish to participate, or for more information, please contact Tom Rainbow:

trainbow@ivybridge.devon.sch.uk

Tel: 07895 310562